

## ROCKWHEEL SERVICE DOCUMENT

### G5 Drum Removal Service Instructions

#### Tools needed for repair

- Parts Manual for your unit
- M10/8mm Allen socket
- M8/6mm Allen socket
- M8x60 pusher bolts

1. Remove six (6) M10 bolts and two (2) M8 plug bolts from cover. These are items 76 and 78, figure 1.
2. Use two (2) M8 x 60 pusher bolts in the M8 holes on opposite sides to press drum cover off. Figure 3.
3. Remove eight (8) M10 drum bolts. Figure 4
4. Use a pry bar to gently slide the drum off. Figure 5

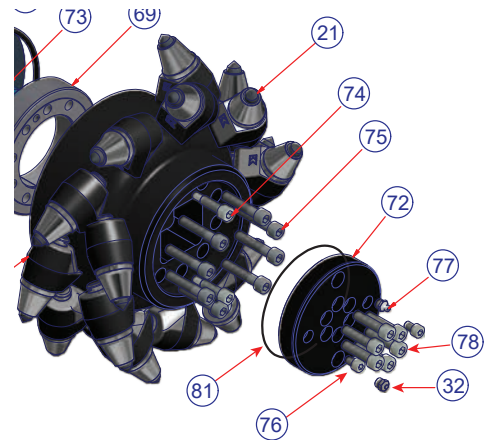


Figure 1, G5 drum assembly



Figure 2, G5 drum end cap showing bolts



Figure 3, pusher bolts



Figure 4, drum bolts



Figure 5, pry drums off