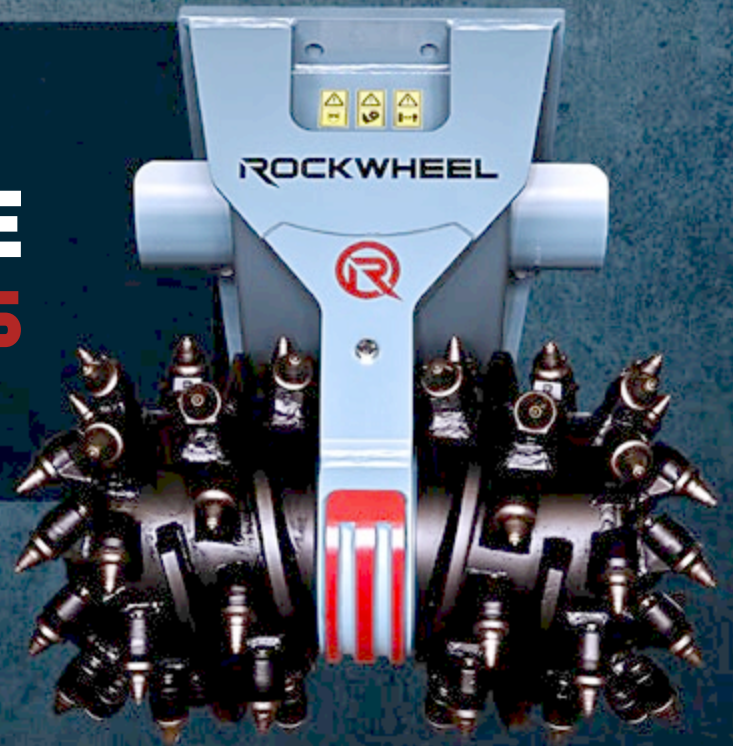
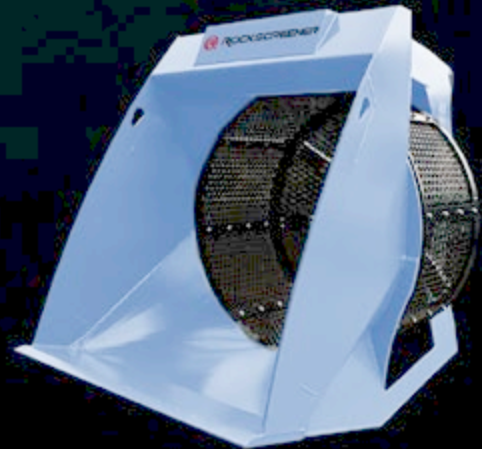


ROCKZONE AMERICAS



Product Guide



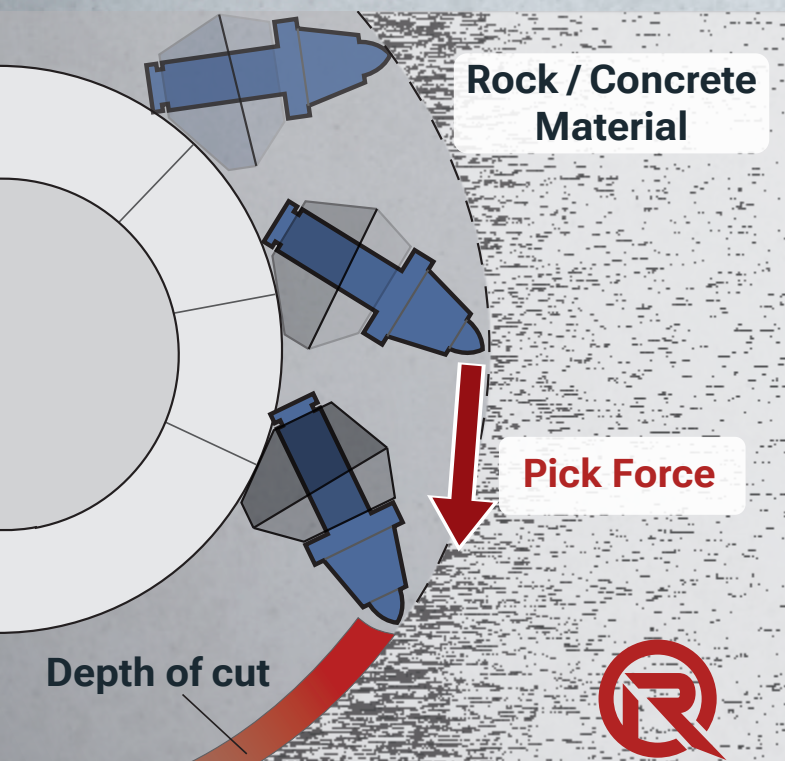


ROCKWHEEL

Faster Than a Hammer in Many Applications

Rockwheel drum cutter attachments deliver true continuous cutting. With non-stop rotation at 60-100 RPM and exceptionally high torque, Rockwheels generate 3,000-6,000 cutting “bites” per minute.

While each individual bite may be small, the cumulative cutting action delivers impressive speed, control, and productivity—often outperforming traditional hammer methods.



Carbide-tipped picks attack material at a 45° - 50° angle.



WHY ROCKWHEEL?

Low Vibration, Low Noise

Minimal vibration and noise. Work safely next to buildings, infrastructure, and in urban areas without being disruptive.

Precision Cutting

Twin drums remove only the target material, leaving surrounding rock and base intact. No over-break and no unnecessary backfilling.

Fast, Easy Setup

Hooks up with just two hydraulic lines (like a standard hammer). No case drain required on most models—just connect and get to work.

Reusable Backfill

Finely crushed output can be used on-site as backfill, eliminating extra crushing, hauling, and waste.

Max Torque Drive

Up to 2:1 gear reduction delivers unmatched torque and cutting power for faster rock and concrete removal, boosting productivity.

Smart Motor Protection

A built-in valve system ensures soft starts and guards the hydraulic motor from cavitation, pressure spikes, and overheating for longer equipment life.

Heavy-Duty Build

Rugged construction withstands brutal workloads with minimal maintenance, ensuring maximum uptime on the toughest jobs.



TRENCHING



PRECISION EXCAVATION



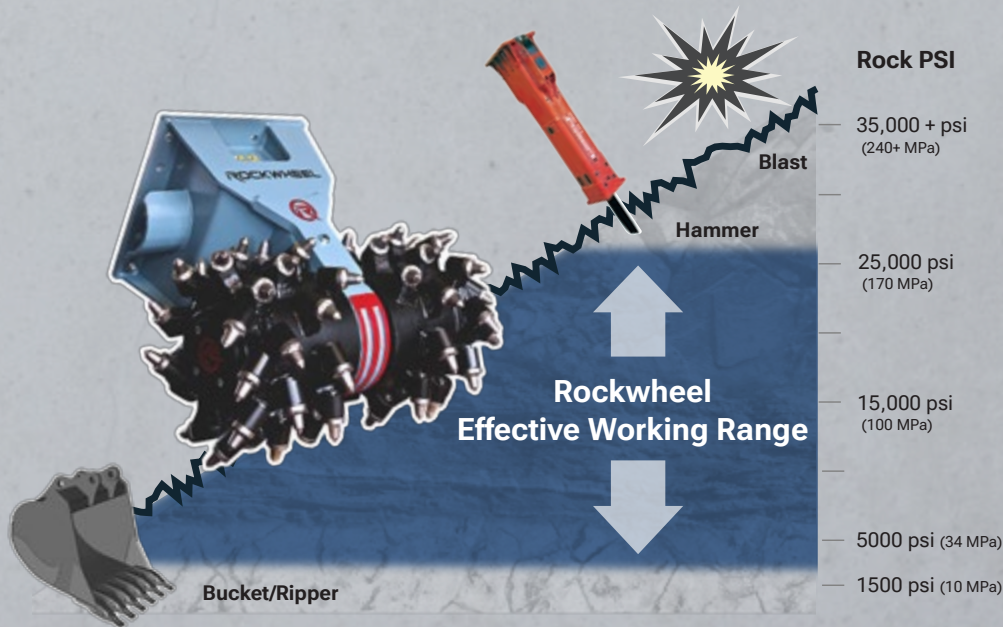
DEMOLITION



SECANT WALL



Rock Removal Working Range By Implement Type





Lightweight Champion

C2

Rockwheel with chain drive
Carriers 1 to 3 tons

- Maintenance-free chain drive.
- 66 kg - the lightest unit on the market.



Compact to Mid-Sized Carriers

G5 / G5T / D10 / D15

Rockwheel with gearbox drive (G5, G5T)
Carriers 3 to 12 tons

Rockwheel D10 and D15 with direct drive motor
Carriers 8 to 20 tons

- Transmission with gear reduction for maximum torque.
- G5 T has a second motor for double the power.

ROCKWHEEL Twin Drum Models

Specification		C2	G5	G5 T	D10	D15
Excavator weight	Ton	0.7 - 2.5	2.5 - 6	5 - 10	8 - 12	13 - 20
Hydraulic Input power	Hp (kW)	13 (9.5)	30 (22)	60 (44)	40 (30)	55 (41)
Weight (w/o bracket)	Lbs (kg)	145 (66)	400 (181)	440 (200)	950 (426)	1,315 (595)
Maximum pressure	PSI (bar)	3263 (225)	5800 (400)	5800 (400)	5800 (400)	5800 (400)
Hydraulic Flow Range	US gpm (L/min)	7.8 - 15 (30 - 60)	15 - 25 (56 - 95)	20 - 45 (76 - 170)	16 - 31 (60 - 121)	25 - 35 (94 - 133)
Gear Reduction ratio		1:1	2:1	2:1	1:1	1:1
Drum speed	RPM	80 - 155	70 - 120	50 - 107	80 - 155	75 - 105
Max. Torque	Ft/Lbs (kNm)	420 (5.7)	3738 (5.1)	7476 (10.1)	3522 (4.8)	5861 (7.9)
Max. Cutting Force	Lbs (kN)	949 (4.2)	6703 (29.8)	13,405 (59.6)	5076 (22.6)	7522 (33.4)
Drum diameter	In. (mm)	10 (270)	13 (340)	13 (340)	16 (423)	18 (475)
Drum width	In. (mm) *optional size	12 (300)	16 (405) *20 (500)	20 (500) *16 (405)	29 (743)	33 (832)
Cutter length	In. (mm)	20 (509)	24 (618)	24 (618)	31 (798)	37 (937)



Direct Drive

D20 / D30

Rockwheel with direct drive
Carriers 17 to 42 tons

- Stout construction.
- Efficient, high torque direct-drive motor.
- Minimal maintenance.



Pure Power

G40 / G50 / G60 / G125

Rockwheel with gearbox drive
Carriers 30 to 150 tons

- Twin motor technology for narrowest cut and high concentration of cutting power.
- Reduction gearbox for torque magnification and highest in-class cutting force.

D20	D30	G40	G50	G60	G125
17 - 28	25 - 42	30 - 50	40 - 61	50 - 75	75 - 125
94 (70)	147 (110)	188 (140)	188 (140)	295 (220)	536 (400)
2,535 (1,170)	3,183 (1,444)	4,250 (1,932)	5,419 (2458)	5,463 (2478)	11,950 (5420)
5800 (400)	5800 (400)	5800 (400)	5,800 (400)	5,800 (400)	5,800 (400)
40 - 55 (150 - 208)	55 - 110 (208 - 412)	85 - 110 (320 - 415)	85 - 110 (320 - 414)	120 - 165 (455 - 625)	185 - 264 (700 - 1,000)
1:1	1:1	1.2 : 1	1.2 : 1	1.2 : 1	1.2 : 1
50 - 75	50 - 80	45 - 75	45 - 75	45 - 65	40 - 50
13,206 (18)	19,715 (27)	29,502 (40)	31,695 (43)	47,316 (64)	115,750 (157)
12,462 (55)	17,752 (79)	23,604 (105)	24,771 (110)	36,980 (165)	76,280 (339)
24 (646)	27 (677)	27 (684)	29 (726)	29 (726)	36 (925)
42 (1058) *36 (910)	46 (1156) *37 (935)	33 (835)	41 (1050)	41 (1050)	59 (1.494)
45 (1.155)	46 (1.170)	37 (943)	53 (1356)	53 (1.350)	66 (1.686)



ROCKWHEEL



Rockwheel TC (trench cutter) models provide for the narrowest possible trench width, while the AX (axial) models offer single-drum cutting capability for tough and unique cutting requirements.



Trench Cutter Rockwheel **TC20 / TC30**

Rockwheel with direct drive, single drum
Carriers 17 to 42 tons

- Robust technology with only four main components: housing, heavy duty hub-bearing assembly, motor and cutting drums.
- Stabilizing wheel allows precision trenching to width of cutting drum.



Axial Direct Drive Rockwheel **AX20 / AX30**

Rockwheel with direct drive, single drum
Carriers 17 to 42 tons

Robust construction with only three main components: housing, motor and cutting drums

ROCKWHEEL AXIAL CUTTERS

Type		TC20	TC30	AX20	AX30
Excavator weight	t	17 - 28	25 - 42	17 - 28	25 - 42
Hydraulic Input power	Hp (kW)	94 (70)	147 (110)	94 (70)	147 (110)
Hydraulic Flow Range	US gpm (L/min)	40 - 55 (150 - 208)	55 - 110 (208 - 412)	40 - 55 (150 - 208)	55 - 110 (208 - 412)
Operating weight	Lbs (kg)	2,092 (962)	3,183 (1.173)	1,955 (885)	2,137 (968)
Cutting width	In. (mm)	26 (650)	27 (680)	25 (646)	27 (678)



TC20 Digging a Utility Trench



CB20 Cutter Bucket



AX30 Axial Grinder

Get more done with two tools in one.

Cutter bucket models integrate a Rockwheel and bucket for maximum efficiency. Cut and clean trenches with a single attachment.

No more time lost changing from cutter to bucket.

Bucket with integrated Rockwheel **CB15 / CB20 / CB30**

Rockwheel with direct drive and bucket housing
Carriers 13 to 42 tons

Designed for rock excavation and quick clean out,
reducing tools needed on site.



ROCKWHEEL CUTTER BUCKET

Type		CB15	CB20	CB30
Excavator weight	Ton	13 - 20	17 - 28	25 - 42
Hydraulic Input power	Hp (kW)	55 (41)	94 (70)	147 (110)
Hydraulic Flow Range	US gpm (L/min)	25 - 35 (94 - 133)	40 - 55 (150 - 208)	55 - 110 (208 - 412)
Operating weight	Lbs (kg)	2092 (951)	4,052 (1,838)	4,338 (1,968)
Cutting Width	In. (mm)	33 (832)	26 (650)	27 (680)



ROCKCRUSHER



With over 35 years of experience in the crushing industry, **Rockcrusher** is the technology leader in the market.

With a **reverse function** to clear jams and **quattro motion** of the crusher jaw, the Rockcrusher is uniquely more capable, powerful, and safe than other crusher buckets.

ON-SITE & MOBILE CRUSHING

With the Rockcrusher, material can be crushed directly on site. Disposal and transportation costs to stationary crushing plants are avoided.

Operation cost is less than \$1 per ton of processed material (including fuel and maintenance costs). For smaller project sites, contractors and startups, the Rockcrusher offers a cost effective solution.





Reusable Backfill Material

Onsite crushed concrete and rock can be reused immediately as backfill, eliminating additional processing. The cubical aggregate compacts efficiently, reducing voids and supporting effective concrete crushing and on-site recycling. Optional magnet available for material separation.

Applications

- Demolition
- Recycling
- Excavation
- Infrastructure construction
- Quarrying
- Natural stone processing

Consistent Aggregate Size

In natural rock processing, the consistency of the size and shape of the output is paramount. Rockcrusher achieves a cubical shaped output with very few fines and flaky material. Because of these characteristics, the processed material can be resold or re-used on site.

Materials

- Concrete
- Brick
- Rock
- Glass and ceramic
- Asphalt
- Mixed inert material

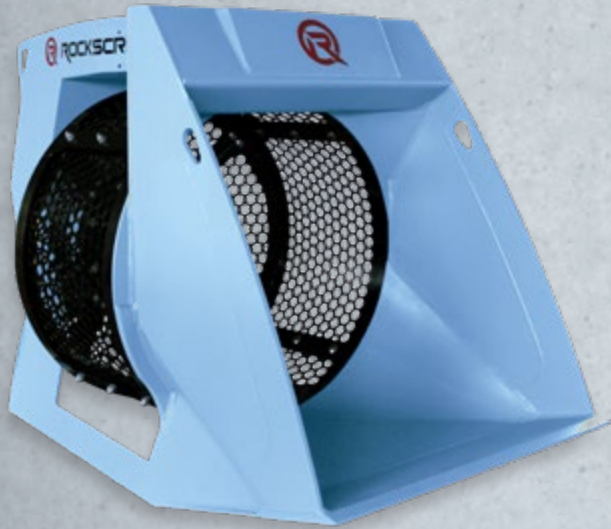
Model		RC 7R	RC 9R	RC 11R	RC 13R
Excavator size	t	12 +	20 +	30 +	40 +
Inlet opening	in	26 x 20	30 x 20	38 x 21	49 x 23
Surface size jaw plates	yd ²	0.75	1	1.4	2.0
Output Size min - max	in	0.5 - 4.0	0.5 - 4.0	0.5 - 5.0	0.5 - 5.0
Oil flow (maximum)	gpm	26	38	53	77
Oil pressure (maximum)	psi	3200	3200	3200	3200
Length	in	76	87	93	101
Width	in	43	48	57	72
Height	in	51	54	55	61
Weight (w/o bracket)	lbs	4400	6600	9020	13,420



ROCKSCREENER

The **ROCKSCREENER** XXL hopper and drum enables larger volumes to be loaded and processed, reducing cycle times per ton.

The XXL drum volume increases the throughput capacity, and hexagonal mesh guarantees consistent sorting.



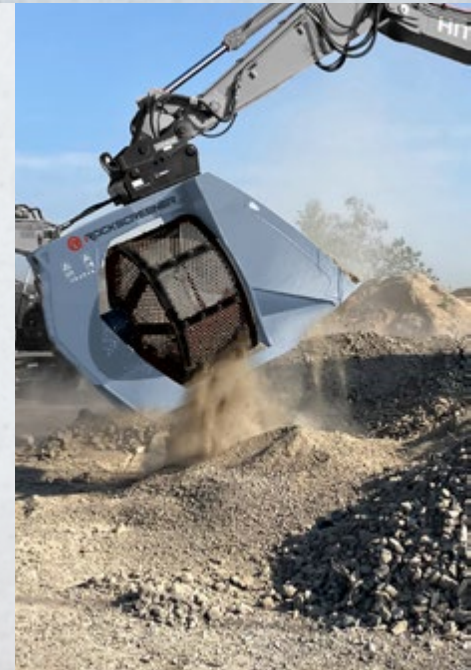
Applications

- Recycling
- Civil Engineering
- Landscaping
- Pipeline
- Road Construction
- Infrastructure
- Rock Processing
- Pre-screening Construction Rubble

Materials

- Rock
- Recycling Material
- Topsoil
- Wood Chips
- Light Materials
- Mixed Material

Model		RSS 800	RS 800	RS 1200	RS 1600	RS 2000
Excavator size	ton	3-9	≥ 9	≥ 14	≥ 25	≥ 35
Screen drum diameter	in	31.50	31.50	47.25	63.00	78.75
Screen drum depth	in	19.75	19.75	29.50	43.50	43.50
Oil pressure	psi	1885	1885	2465	2465	2465
Oil flow	gpm	5	7	20	32	32
Bucket volume	yd ³	0.33	0.33	1.00	2.50	4.50
Total volume	yd ³	0.75	0.75	2.50	6.25	9.75
Length	in	71	71	94	124	148
Width	in	37	37	54	73	87
Height	in	47	47	63	84	88
Weight	lbs	1320	1408	2684	5104	10120





ROCKSORTER

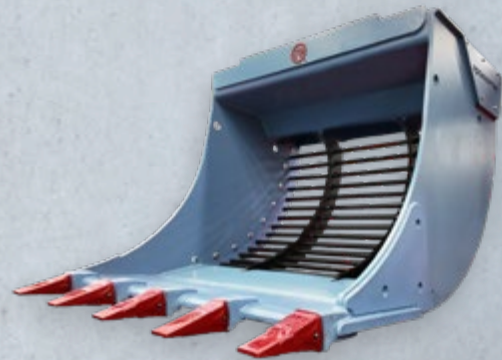


THE ROCKSORTER VIBRATORY SCREENING BUCKET

The Rocksorter delivers fast, efficient material screening with minimal maintenance. Its patented eccentric movement separates fine and coarse material without rotating shafts, reducing wear, lowering operating costs, and increasing reliability.

Adjustable through different screens and grid sets, coupled with a simple, durable design make Rocksorter easier on your machine while helping contractors screen material faster and reduce jobsite costs.

THE RESULT: cleaner material, less machine strain, and a tougher, more cost-effective way to screen on today's demanding jobsites.



Model		V3	V5	V8	V10	V12	V15	V20	V30	V35
Excavator size	ton	2 - 4	3 - 6	5 - 10	7 - 12	10 - 15	13 - 18	15 - 25	25 - 35	30 - 40
Hydraulic flow	gpm	5 - 15	5 - 15	10 - 20	10 - 20	10 - 20	10 - 20	10 - 20	20 - 31	20 - 31
Oil pressure (max)	psi	2500 PSI maximum								
Load Volume	yd ³	0.1	0.27	0.5	0.55	0.81	0.95	1.57	1.57	1.83
Material Output Size	in	~1" - 8"								
Bar Diameter	in	0.8	1	1.2	1.2	1.2	1.2	1.2	1.75	1.75
Bucket Width	in	28	31.5	39	47	47	52	59	59	63
Weight (w/o bracket)	lbs	375	595	1080	1430	1895	2200	3175	3880	4080

*Models available with or without teeth



ROCKZONE MXR MIXER SERIES

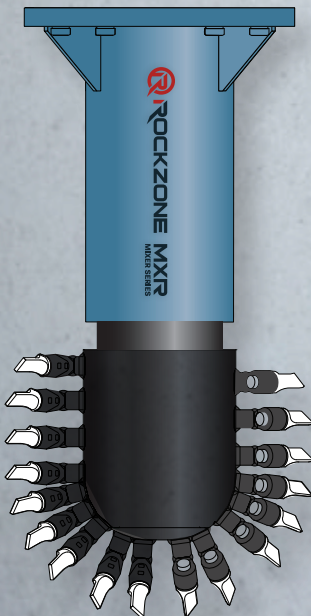


RockZone MXR Series starts with a Rockwheel chassis, making them robust enough for the toughest mixing and remediation applications.

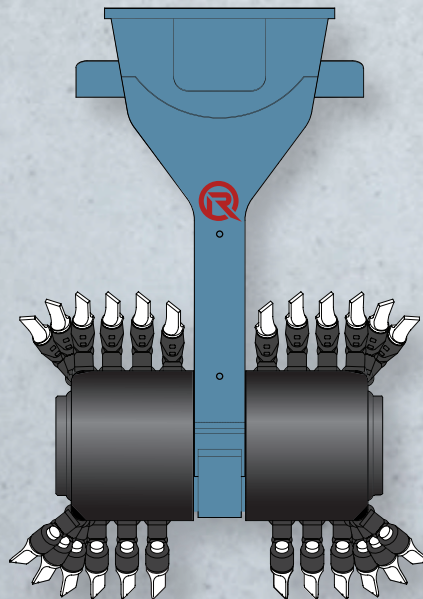
Every MXR is customizable to meet the conditions of the project. Features like drum lacing pattern, drum size, depth extension brackets, injection piping, depth limiters and collision preventers are available.

Stabilization, solidification, and remediation equipment for in situ treatment of:

- Soil
- Sludge
- Dredged material
- Contaminated sites
- Oil & gas drilling waste



AX Mixer Series
Single-Drum Axial



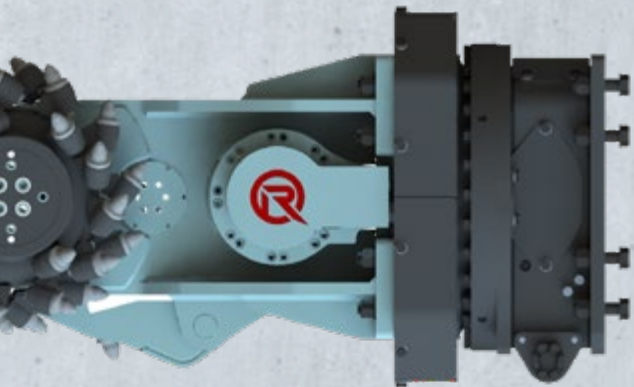
MXR Series
Twin drum long housing mixers





ROTOLOC

Introducing **RotoLoc** - the Rockwheel Rotator System
now available for the D20, D30, and G40 models



RotoLoc provides full 360° in-cab hydraulic rotation with automatic mechanical lockout and 16 secure working positions for unmatched control in any direction. Heavy-duty construction, isolated hydraulic and water circuits, and quick-connect flange mounting make RotoLoc dust-suppression-ready and jobsite-tough for demanding applications.

- **Full 360° In-Cab Hydraulic Positioning**

Seamlessly rotate and position the Rockwheel with precision—all from the comfort of the cab.

- **Automatic Mechanical Lock-Out System**

Built-in safety and control with secure auto lock-out functionality for worry-free operation.

- **16 Optimized Lock-Out Positions**

Choose from 16 secure angle presets for maximum versatility and efficiency on the jobsite.

- **Heavy-Duty Rotation Components**

Engineered for extreme durability in the toughest working environments.

- **Dust Suppression Ready**

Integrated ports for hassle-free connection to dust control systems—keeping operations cleaner and safer.

- **Isolated Hydraulic & Water Circuits**

Independent fluid systems ensure optimal performance and prevent cross-contamination.

- **Quick-Connect Flange Mount at Excavator**

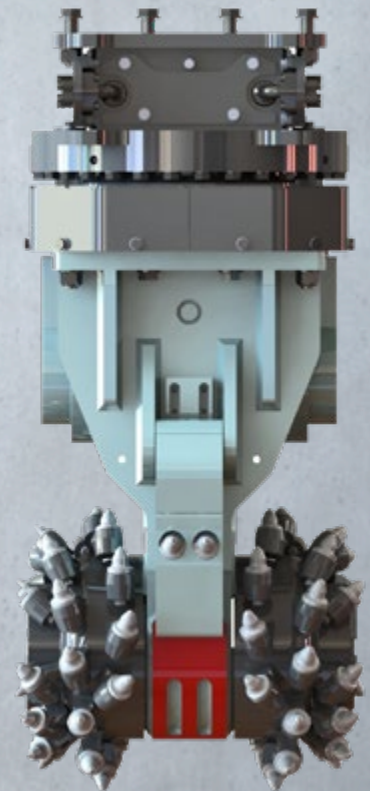
Fast and secure installation with a durable flange-mounted connection.

- **Three Dedicated Hydraulic Flow Ports**

Designed for high-performance flow and control with triple hydraulic line integration.

- **One Water/Coolant Line Connection**

Simplified plumbing for efficient water or coolant supply.





OilQuick automatic quick coupler system allows attachments to be connected and disconnected from the driver's cab within seconds.



As a manufacturing partner with **OilQuick Americas®**, all Rockzone Americas products can be fitted with the world's best automatic quick coupler.



Proudly Made in Superior, Wisconsin



CONNECTTM WORK TOOLS

Connect Work Tools offers a comprehensive line of demolition attachments including oil and gas-fired breakers, shears, magnets, pulverizers, grapples and compactors.

CWP Series Pulverizers



CHG Gas-Fired Series &
CH Oil-Fired Series Breakers



CG Series Rotating Grapples



CMID (with teeth) &
CMIC (with chains) Magnets



CS Series Mobile Shear



CC Series Compactors

**GET CONNECTED.
STAY CONNECTED.**

ConnectWorkTools.com



ROCKZONE AMERICAS

+1 814-466-7134

info@RockzoneAmericas.com

RockzoneAmericas.com

801 Pleasant View Blvd

Bellefonte, PA 16823 USA



RockZone Americas and Connect Work Tools are part of Exodus Global, a family-owned company based in Superior, Wisconsin

BLADECORE™ **CONNECT™** **WORK TOOLS** **OILQUICK®** **ROCKZONE AMERICAS** **SHEARCORE™**